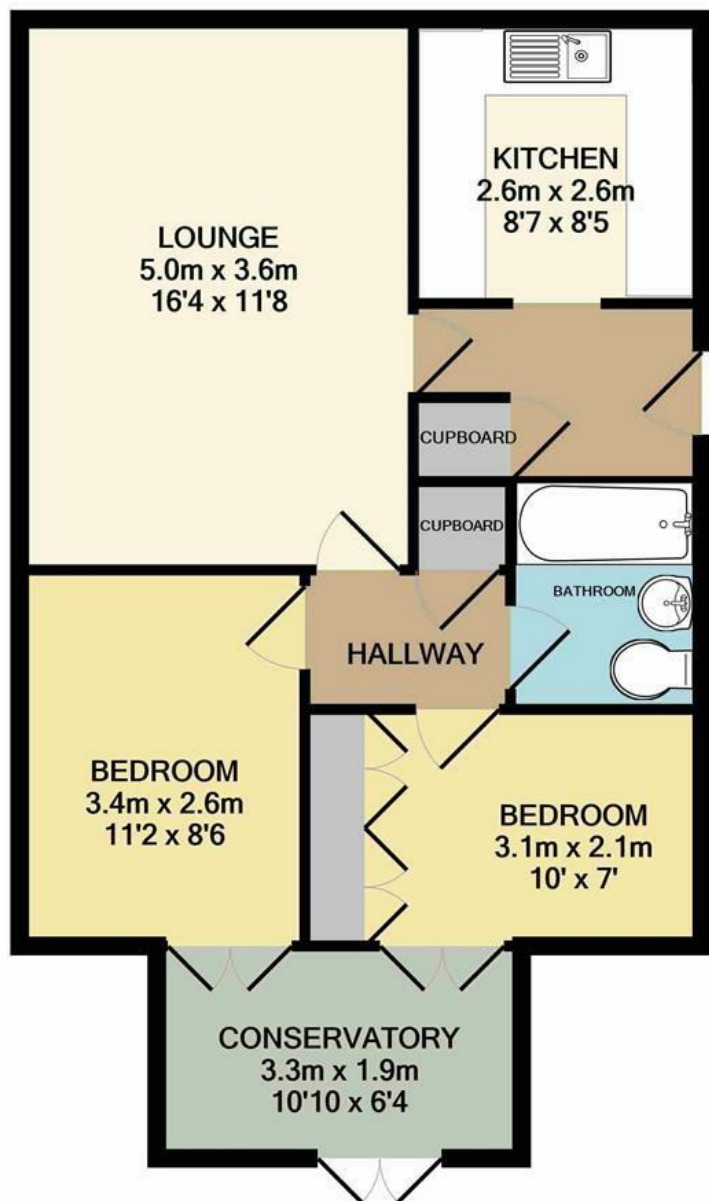




Paddock Gardens | Attleborough | NR17  
Offers In Excess Of £220,000

abbotFox



Whilst every attempt has been made to ensure the accuracy of the floor plan contained here, measurements of doors, windows, rooms and any other items are approximate and no responsibility is taken for any error, omission, or mis-statement. This plan is for illustrative purposes only and should be used as such by any prospective purchaser. The services, systems and appliances shown have not been tested and no guarantee as to their operability or efficiency can be given  
Made with Metropix ©2021

Energy Efficiency Rating		
	Current	Potential
Very energy efficient - lower running costs		
(92 plus) <b>A</b>		
(81-91) <b>B</b>		
(69-80) <b>C</b>		
(55-68) <b>D</b>		
(39-54) <b>E</b>		
(21-38) <b>F</b>		
(1-20) <b>G</b>		
Not energy efficient - higher running costs		
<b>England &amp; Wales</b>	EU Directive 2002/91/EC	

Disclaimer – In accordance with the Property Misdescriptions Act, the company gives notice that all descriptions, references to condition, necessary permissions for use and other details are given in good faith and believed to be correct, but any intending lessees do not rely on them as statements of fact, but must satisfy themselves by inspection or other means, as to their accuracy.



abbotFox are delighted to present this two bedroom semi-detached bungalow on Paddock Gardens, Attleborough. Located at the bottom of a cul-de-sac this property benefits from a peaceful, private position. Internal space offers entrance hall, modern kitchen, generous lounge diner, bathroom, master bedroom and second bedroom with access to conservatory. All rooms offering lots of space and functional living. Externally, a driveway for at least three cars, front and rear lawn gardens with storage shed.

Attleborough is a popular town with a range of local amenities, there are banks, doctors' and dental surgeries, solicitors, accountants and sports clubs. With many primary and secondary schools. In addition to the convenience of being close to the A11, it has a railway station on the Norwich to Cambridge line, with regular direct services running from Norwich London Liverpool Street. The city of Norwich itself is only some 16 miles away.

